

CadCamSystems

Support Document

Install New FLEX File

The server based license file is known as the FLEX. Anytime there is a change in your license (Examples: renew your maintenance, add new software, change dongles) you will receive a new FLEX file by E-Mail. Together with your dongle your FLEX will enable you to run your Delcam products. This file needs to be placed in the C:/dcam/config/pass folder on the computer setup with the FLEX server software. Your FLEX file will have to be edited before your software will run on the client computers. You can do an automatic or manual install:

AUTOMATIC INSTALL

The file with a .dcamlc extension is an automatic install script that will write the license file to the C:/dcam/config/pass folder on the computer.

1. Close any Delcam software you have running on the FLEX server.
2. Move the current file dcam.flx to the 'Old' folder as a backup file..
3. Save the license file to your desktop, then double click to run. This will over write any dcam.flx file you currently have in your C:/dcam/config/pass folder.
4. Follow instructions below.

MANUAL INSTALL

The license file has a filename with a .lic extension.

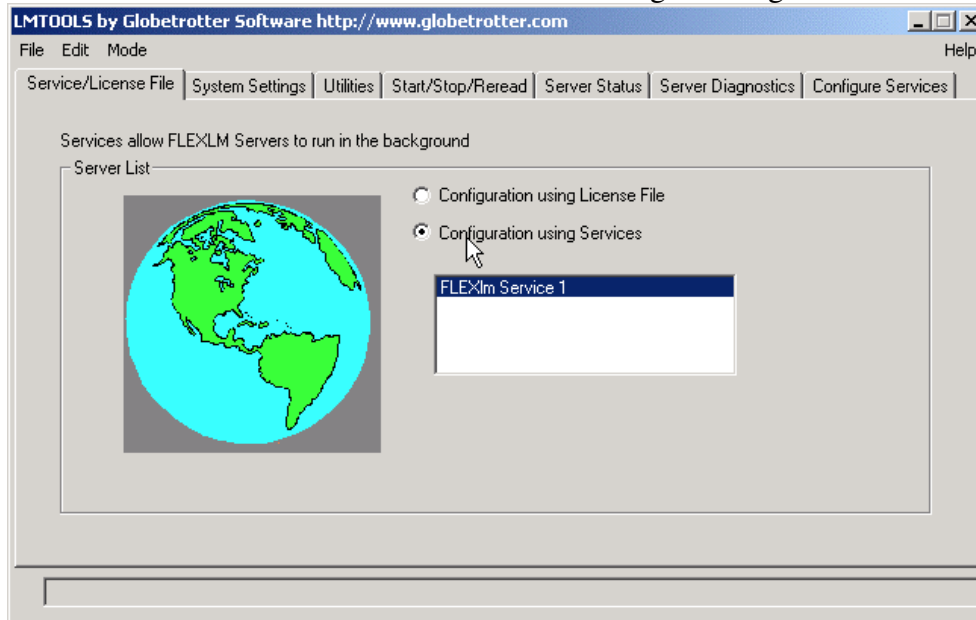
1. Close any Delcam software you have running.
2. Move the current file dcam.flx to the 'Old' folder as a backup file.. Then save the new file to C:/dcam/config/pass and rename it dcam.flx. Make sure you rename it exactly as shown in lowercase.
3. Follow instructions below.

EDIT FILE AND RESTART LICENSE SERVER

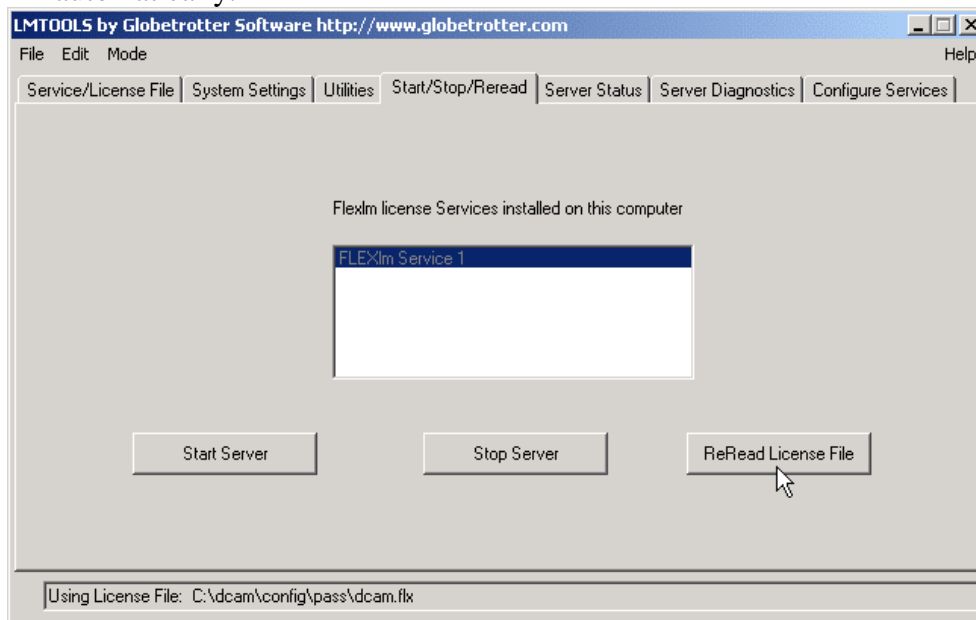
Follow these steps for both types of installs.

1. Open the dcam.flx file to edit the first few lines so they match the file in the Old folder. Copy everything down to the FEATURE lines. The SERVER and the DAMEON lines are the important ones. They must match the old file exactly.
2. Run the license manager tool from the Start menu.

3. From the Service/License File tab select Configure using Services.



4. From the Start/Stop/Reread tab select the ReRead License File button. You must always re-read any new license file to be used by the server; it is not picked up automatically.



5. There should be no need to replace the license file on all the client computers. You can use the PAFWizard program on the client computers to check the license file to make sure it updated properly.